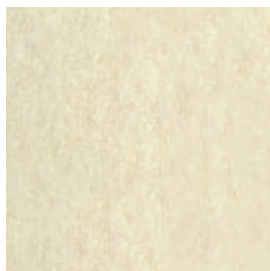


MATERIALS + COLORS

Europost2 by Gabriel cat 4



60000



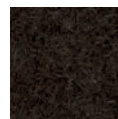
61052



61003



61107



61109



61005



61004



62061



62060



68126



68128



68003



68072



68127



68035



68030



66115



65072



66039



66118



66119



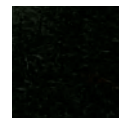
66116



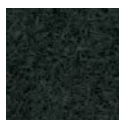
66117



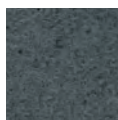
60051



60999



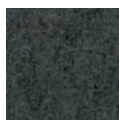
60058



66056



60003



60016



67016



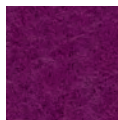
67066



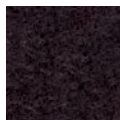
60017



65070



65069



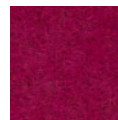
61108



65071



64150



64009



64035



64045



63073



64070



64068



63016



63004



64149



63070



63072

Composition
100% pure new wool

Weight
820 gr/ml

Width
140 cm

Abrasion test
50.000 Martindale

Light solidity
5 - 7



Comfort + by Gabriel cat 7



63001



63006



9055



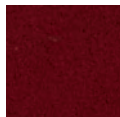
0028



64014



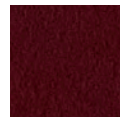
0026



1153



64002



64001



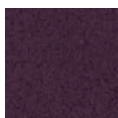
64003



64013



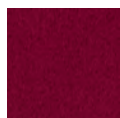
1414



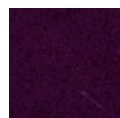
1163



64012



0029



1065



64009



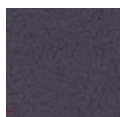
65003



1147



1043



65012



66002



1124



8402



66008



1167



0040



67002



0035



66004



67001



66010



0033



0034



8422



1160



9074



66005



9075



8384



280



0005



0010



62003



62004



68007

Comfort + by Gabriel cat 7



Composition

88% polyester
12% polyurethane

Weight

385 gr/ml

Width

140 cm

Abrasion test

150.000 Martindale

Light solidity

5

Cleaning



Freeform



Freeform

Freeform is a soft and coloured integral polyurethane and is generally injected on a structure (insert) made of steel.

Freeform is fire retardant according to the following standards:
Italian Class 1M, UNI 9175 (1987) - UNI 9175/FA1(1994),

British regulations 1988 n.1324 schedule 1, part 1 and amendment n. 2358 (1989), BS 5852 crib n.5, French M4.

Average density for freeform 250kg/m², freeform advance 400kg/m

Metal



F 040 polished steel



F 047 matt chromed steel



A 041 polished aluminium



B 065 brushed stainless steel

Wood finishes



A 1.101 beech natural stain



A 1.141 beech natural cherry stain



A 1.146 beech american walnut stain



A 1.134 beech wenge stain



A 1.144 beech wenge dark stain



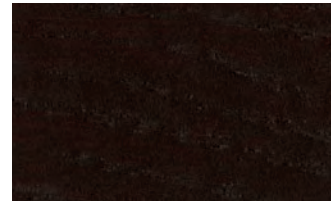
A 1.111 beech black stain



R 3.011 solid oak oiled



R 3.102 oak light stain



R 3.144 oak wenge dark stain



NC 8.011 solid black walnut oiled



NC 8.146 black walnut stain



A 1.452 white highgloss lacquered **A 1.337** black matt lacquered

Attention important information

Natural wood is not a synthetic material. Each timber has a different colour and structure. Slightly differences in colour and brillancy between the samples of the wood collection and manufacturing are no reason for a claim.

Remarks for all the shown materials

Even considering the highest accuracy in the colours representation, tone variations may occur due to the different graphical visualization of the computer displays.

Stretchy category 4

TONON

Clou category 6

TONON

Fluffy category 4

TONON

Fluffy category 4

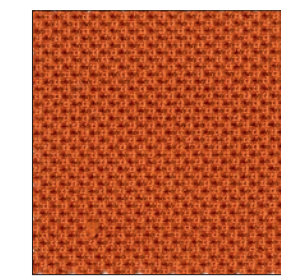
TONON

Felix category 2

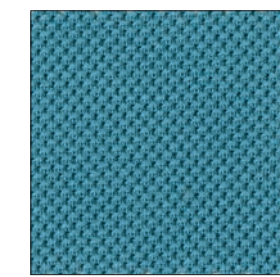
TONON



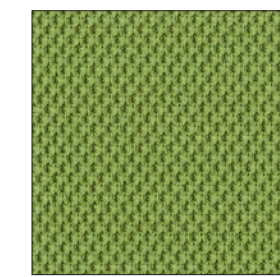
E01



E08



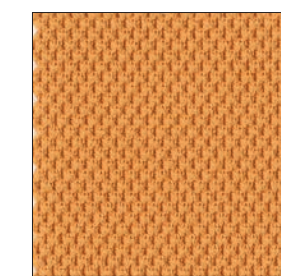
E04



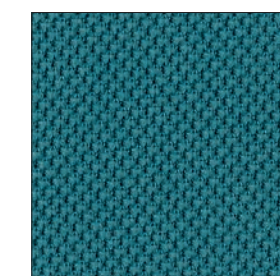
E06



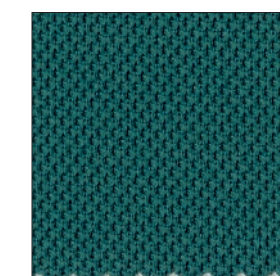
E07



E02



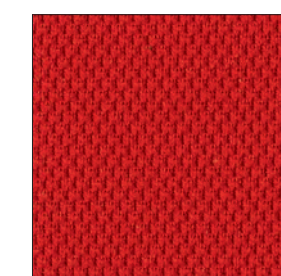
E05



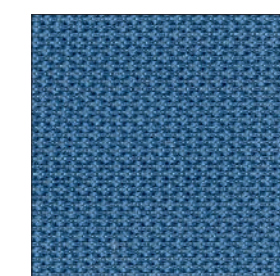
E11



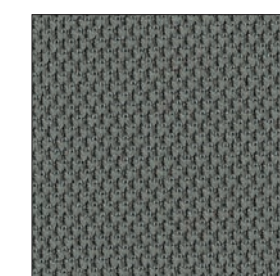
E13



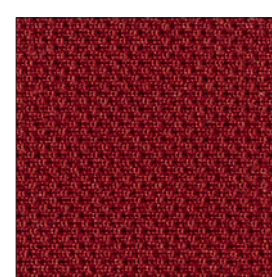
E03



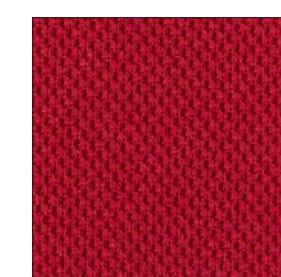
E10



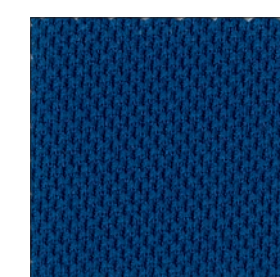
E12



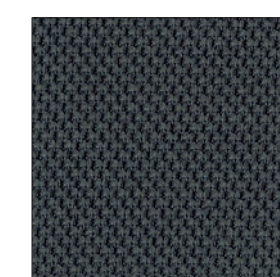
E14



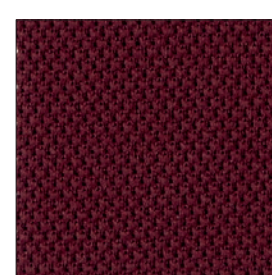
E09



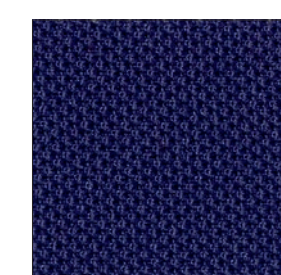
E21



E18



E19



E20



E22



E23



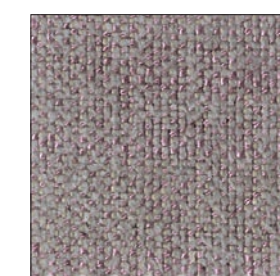
H20



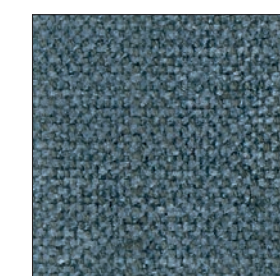
H07



H04



H12



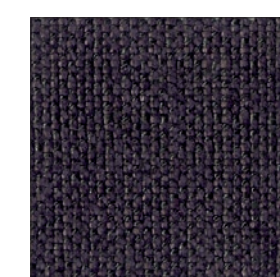
H08



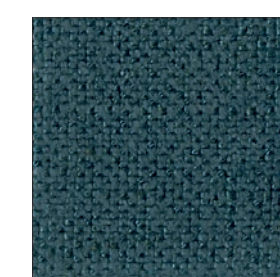
H16



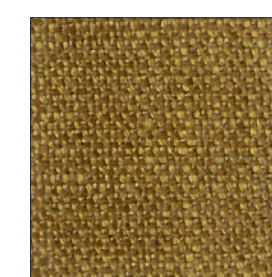
H10



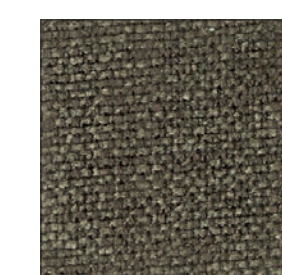
H13



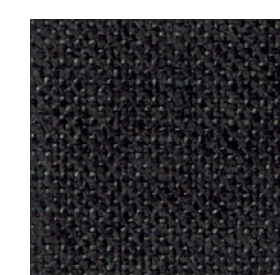
H14



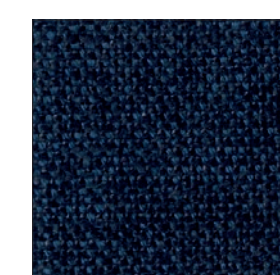
H17



H05



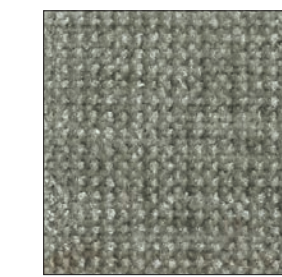
H06



H09



H18



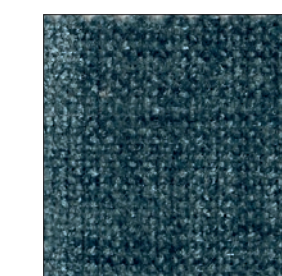
U75



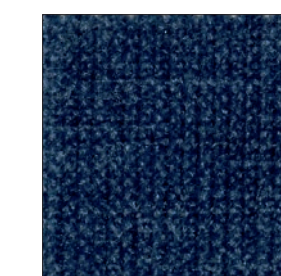
U77



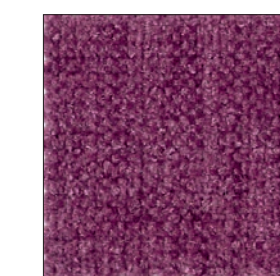
U76



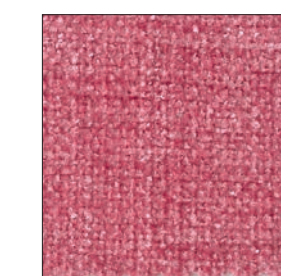
U74



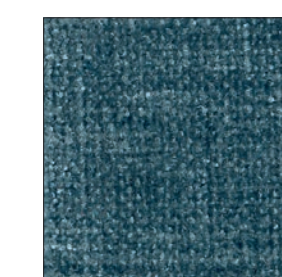
U58



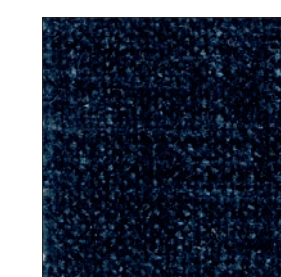
U40



U42



U54



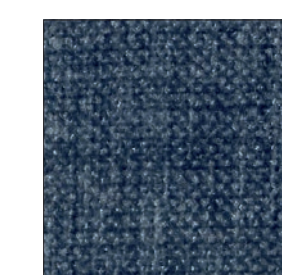
U61



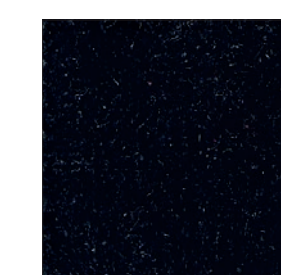
U41



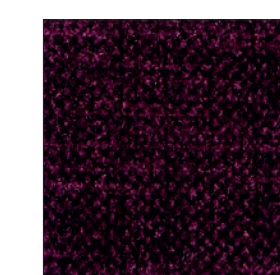
U37



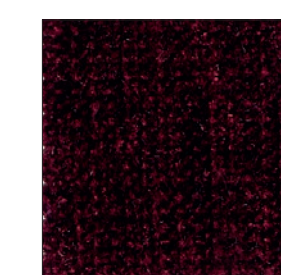
U55



U80



U38



U36



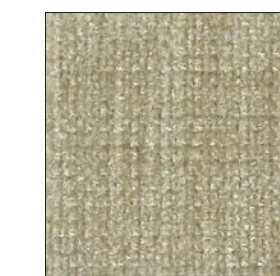
U13



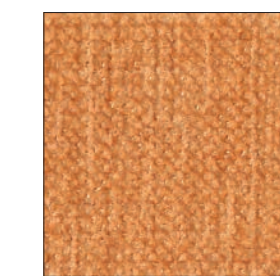
U19



U12



U11



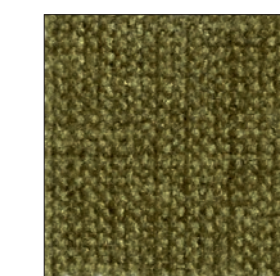
U22



U07



U21



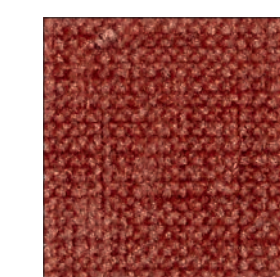
U67



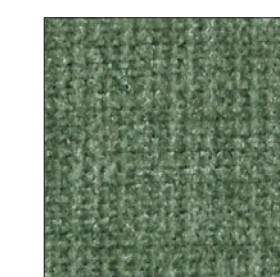
U69



U09



U29



U71



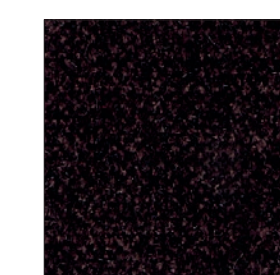
U70



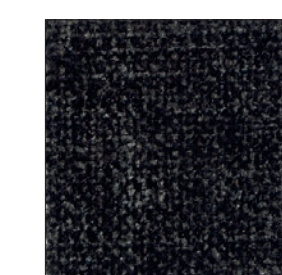
U06



U04



U01



U78



28A



28B



28F



28E



28L

Architecture category 4

TONON



4F1



4F7



4F5



4F6

Stramacchiami category 4



48L



48G



48V



48S

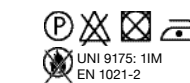
TONON
made in Italy www.tononitalia.com

Tonon & C. spa
Via Diaz 22 33044 Manzano Italy
Tel. +39 0432 740740 Fax +39 0432 740770
www.tononitalia.com tonon@tononitalia.it

Architecture category 4

TONON

Composizione <i>Composition</i> Composition Zusammensetzung	Peso <i>Weight</i> Poids Gewicht	Altezza <i>Widht</i> Hauteur Breite	Abrasione <i>Abrasion test</i> Abrasion Scheuertest	Solidità luce <i>Light solidity</i> Solidité lumière Lichtechtheit	Lavaggio <i>Washing</i> Lavage Pflegeanleitung
100% polyester	410 gr/mtl	140 cm	34.000 Martindale	4-5	



Clou category 6

Composizione <i>Composition</i> Composition Zusammensetzung	Peso <i>Weight</i> Poids Gewicht	Altezza <i>Widht</i> Hauteur Breite	Abrasione <i>Abrasion test</i> Abrasion Scheuertest	Solidità luce <i>Light solidity</i> Solidité lumière Lichtechtheit	Lavaggio <i>Washing</i> Lavage Pflegeanleitung
48% viscose 52% linen	610 gr/mtl	140 cm	22.000 Martindale	4-5	

Felix category 2

Composizione <i>Composition</i> Composition Zusammensetzung	Peso <i>Weight</i> Poids Gewicht	Altezza <i>Widht</i> Hauteur Breite	Abrasione <i>Abrasion test</i> Abrasion Scheuertest	Solidità luce <i>Light solidity</i> Solidité lumière Lichtechtheit	Lavaggio <i>Washing</i> Lavage Pflegeanleitung
42% cotton 48% polyester 10% viscose	630/640 gr/mtl	138 cm	30.000 Martindale	4-5	

Fluffy category 4

TONON

Composizione <i>Composition</i> Composition Zusammensetzung	Peso <i>Weight</i> Poids Gewicht	Altezza <i>Widht</i> Hauteur Breite	Abrasione <i>Abrasion test</i> Abrasion Scheuertest	Solidità luce <i>Light solidity</i> Solidité lumière Lichtechtheit	Lavaggio <i>Washing</i> Lavage Pflegeanleitung
100% polyester	692 gr/mtl	140 cm	40.000 Martindale	4-5	

Stretchy category 4

TONON

Composizione <i>Composition</i> Composition Zusammensetzung	Peso <i>Weight</i> Poids Gewicht	Altezza <i>Widht</i> Hauteur Breite	Abrasione <i>Abrasion test</i> Abrasion Scheuertest	Solidità luce <i>Light solidity</i> Solidité lumière Lichtechtheit	Lavaggio <i>Washing</i> Lavage Pflegeanleitung
100% polyester	470 gr/mtl	160 cm	150.000 Martindale	5	

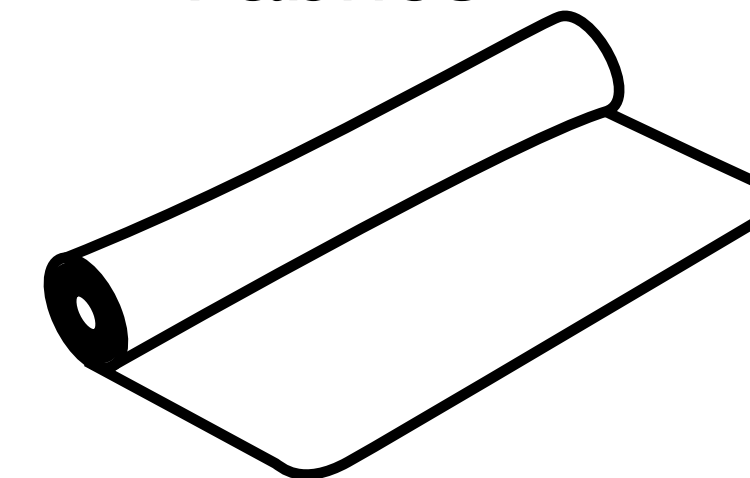
Stramacchiami category 4

Composizione <i>Composition</i> Composition Zusammensetzung	Peso <i>Weight</i> Poids Gewicht	Altezza <i>Widht</i> Hauteur Breite	Abrasione <i>Abrasion test</i> Abrasion Scheuertest	Solidità luce <i>Light solidity</i> Solidité lumière Lichtechtheit	Lavaggio <i>Washing</i> Lavage Pflegeanleitung
100% polyester	600/650 gr/mtl	140 cm	42.000 Martindale	4-5	

lavaggio a secco <i>dry cleaning</i> nettoyage à sec <i>chemische Reinigung</i>	non candeggiare <i>do not bleach</i> ne pas blanchir <i>nich bleichen</i>	non asciugabile a macchina <i>do not machine-dry</i> ne pas sécher à machine <i>nich Trockner geeignet</i>	MAX 110° C MAX 150° C
------------------------------------------------------------------------------------------	------------------------------------------------------------------------------------	---------------------------------------------------------------------------------------------------------------------	--------------------------

TONON
made in Italy www.tononitalia.com

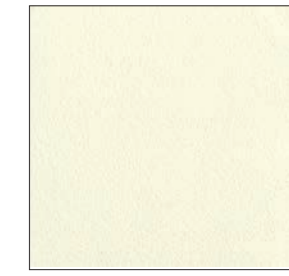
Fabrics



Soft category 9



Soft 117



Soft N40



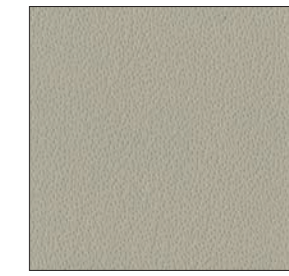
Soft 501



Soft 158



Soft 195



Soft 199



Soft 179



Soft 97



Soft 563



Soft 96



Soft 504



Soft 526



Soft 564



Soft 207



Soft NH3



Soft 505



Soft 565



Soft 566



Soft 203



Soft 112

TONON

Soft category 9



Soft 524



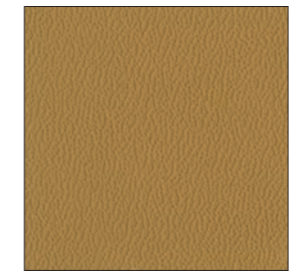
Soft 537



Soft 188



Soft 533



Soft 525



Soft 509



Soft NH2



Soft 534



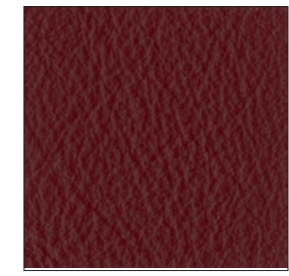
Soft 506



Soft 140



Soft NH1



Soft 536



Soft 507



Soft 175



Soft 540



Soft 539



Soft 508



Soft 147



Soft 541



Soft 532

TONON

Soft category 9



Soft 160



Soft 518



Soft 513



Soft 542



Soft 531



Soft 517



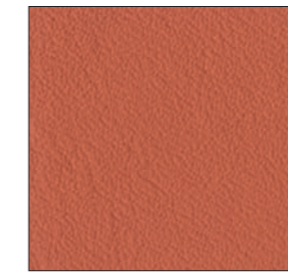
Soft 514



Soft 519



Soft 529



Soft 516



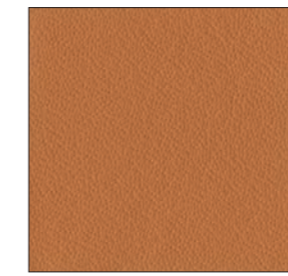
Soft 521



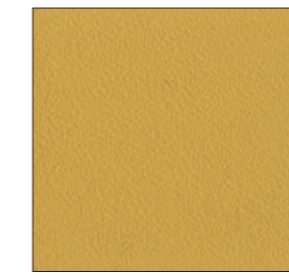
Soft 520



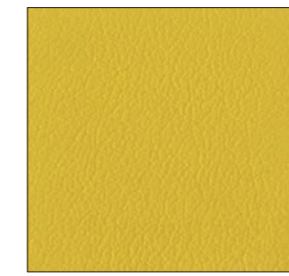
Soft 98



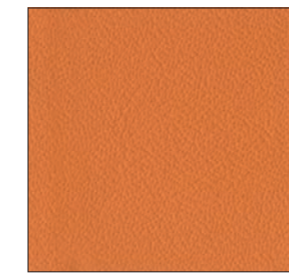
Soft 527



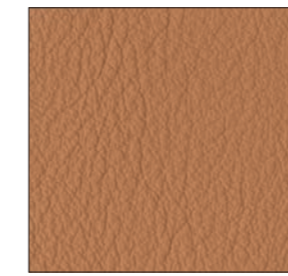
Soft 522



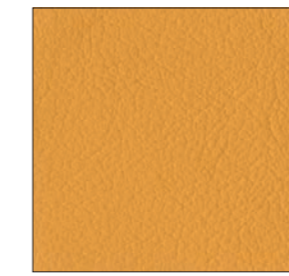
Soft 192



Soft 528



Soft 515



Soft 523



Soft 176

TONON

Soft category 9



Soft 544



Soft 548



Soft 556



Soft N46



Soft 546



Soft 549



Soft 557



Soft 559



Soft 545



Soft 550



Soft 558



Soft 141



Soft 543



Soft 553



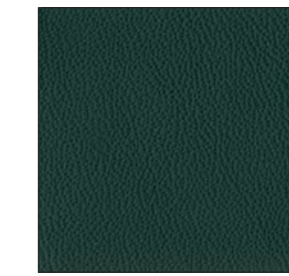
Soft 560



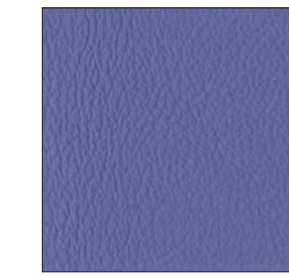
Soft 568



Soft 547



Soft 554



Soft 561



Soft 101

TONON

Tender category 7

TONON

Tender category 7

TONON

Tender category 7

TONON



Tender 617



Tender 267



Tender 603



Tender 204



Tender 201



Tender 209



Tender 604



Tender 619



Tender 695



Tender 200



Tender 268



Tender 212



Tender 202



Tender 684



Tender 218



Tender 692



Tender 621



Tender 265



Tender 216



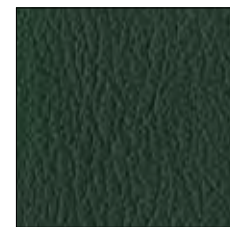
Tender 206



Tender 203



Tender 614



Tender 213



Tender 672



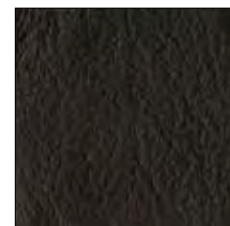
Tender 266



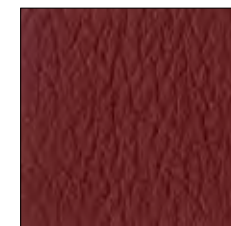
Tender 605



Tender 217



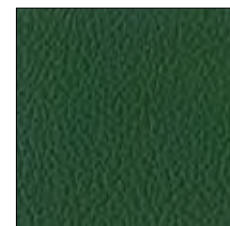
Tender 258



Tender 210



Tender 612



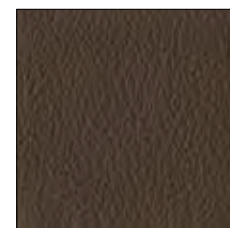
Tender 626



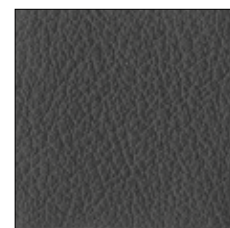
Tender 608



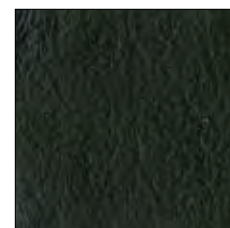
Tender 674



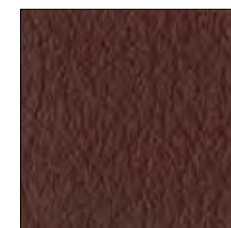
Tender 606



Tender 602



Tender 220



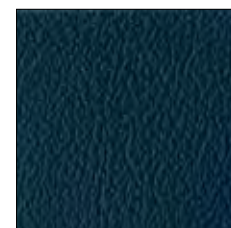
Tender 211



Tender 615



Tender 215



Tender 609



La pelle è un prodotto naturale, si adatta rapidamente alla temperatura ed alla forma del corpo umano ed è morbida al tatto. Ogni pelle tuttavia è un pezzo unico, con le proprie caratteristiche che durante il processo di concia e di colorazione vengono armonizzate il più possibile tra loro. Piccole cicatrici, punture di insetti, pieghe e macchie non ne diminuiscono la qualità, al contrario sono il segno della genuinità del prodotto. Con il calore del corpo umano la pelle tende a cedere ed a seconda delle caratteristiche del prodotto potrebbero quindi formarsi delle pieghe permanenti. Consigli per la cura e la pulizia della pelle. Passate regolarmente sulla pelle un panno umido per togliere la polvere. Piccole macchie o tracce di penna possono essere eliminate con una gomma per cancellare non colorata. Rimuovete immediatamente eventuali liquidi e pulite subito la pelle con un panno umido. Per la pulizia utilizzate preferibilmente acqua distillata e sapone neutro. Di tanto in tanto trattate la superficie con prodotto specifico per la cura della pelle, evitando assolutamente prodotti aggressivi. Va ricordato che il colore della pelle può virare in caso di esposizione diretta alla luce solare, la pelle bianca in particolare è molto sensibile, questo tuttavia non è un difetto ma la reazione di un prodotto naturale.

Leather is a natural product, it quickly adjusts to the body temperature and is soft and comfortable. Every hide is a unique specimen with special properties that are harmonized as much as possible during the tanning and dyeing process. Small scars, insect bites, folds or stains do not reduce the quality of the leather; they simply confirm this naturalness. Leather can expand due to the body heat and, depending on the conditions, the folds will not reform. Tips for cleaning and care. Dust the leather with a damp rag. Small stains or ballpoint pen marks can be removed with a transparent rubber eraser. Soak up liquids immediately with a soft rag and then wipe them off with a damp rag. It is best to use distilled water and mild detergent. You should treat the furniture with a leather care product occasionally. Avoid aggressive cleaners. Please note that the colour of the leather may change over time if continually exposed to strong light; white leather is especially sensitive, this is not a material defect but a reaction of the natural product to strong light sources.

ARTICOLO Article		VINTAGE		
UTILIZZO Use		Per rivestimento di imbottiti e arredamento / Interior upholstery		
ORIGINE Origin		ITALIA Italy		
TARIFFA DOGANALE Customs code		59091090		
ALTEZZA Width		138/140 cm		
LUNGHEZZA ROTOLO Roll length		30 mt		
CARATTERISTICHE TECNICHE Technical Properties		UNITA' DI MISURA Unit	SPECIFICHE SPECIFICATE Specified	METODO DI PROVA Test method
PESO Weight		g/cm ²	720 ± 5%	UNI EN ISO 2286-2
PESO TESSUTO Backing weight		g/cm ²	250 ± 5%	UNI EN ISO 2286-2
SPESSORE Thickness		mm	1,25 ± 0,1	UNI EN ISO 2286-3
COMPOSIZIONE SPALMATURA Coating composition		100% PVC		
COMPOSIZIONE DEL TESSUTO DI SUPPORTO Fabric composition		50% PES 50% COT		
COMPOSIZIONE Composition		66% PVC 17% PES 17% COT		
RESISTENZA A ROTTURA Tensile strength	LONG. Long.	N/5cm	1100	UNI EN ISO 1421
	TRASV. Across		700	
ALLUNGAMENTO A ROTTURA Breaking elongation	LONG. Long.	%	15	UNI EN ISO 1421
	TRASV. Across		20	
RESISTENZA ALLA LACERAZIONE Tear strength	LONG. Long.	N	40	UNI EN ISO 4674 - 1 B
	TRASV. Across		50	
RESISTENZA AL DISTACCO TRA SPALMATURA E SUPPORTO Peel adhesion	LONG. Long.	N/5cm	30	UNI EN ISO 2411
	TRASV. Across		30	
RESISTENZA ALL'ABRAZIONE MARTINDALE Martindale Abrasion Resistance		CICLI cycles	22.000	UNI EN ISO 5470-2/03 Met.1
SOLIDITA' DEL COLORE ALLA LUCE (XENOTEST) Colour fastness to light (Xenotest)		SCALA DEI BLU BLUE SCALE	>4	UNI EN ISO 4582/HB7
INFAMMABILITA' Flammability		Emb.	A.E.	FMVSS 302
CLASSIFICAZIONE DI REAZIONE AL FUOCO Flame retardant		CLASSE 1 IM Class 1IM		FMVSS 302 ISO 3795 UNE 9175
LAVAGGIO E MANUTENZIONE Cleaning and maintenance		Pulire con un tessuto umido ed imbevuto con detersivo neutro. Non utilizzare prodotti aggressivi o abrasivi. Non utilizzare alcun tipo di candeggina. Pulire delicatamente e riacquagnare con acqua tiepida. Clean it with a soft cloth soaked in mild detergent. DO NOT use aggressive or abrasive cleaning products. DO NOT use bleach or any cleaning agents containing bleach. Clean it gently and rinse it with lukewarm water.		
ESENTE DA Free from		COL - AZO - FCW - PCB - FORMALDEIDE o altre sostanze nocive come a norma di legge COL - AZO - FCW - PCB - FORMALDEHYDE and other harmful substances as required by law		
ATTENZIONE:				
Le finiture di colore chiaro non devono essere messe a contatto con materiali scurestanti coloranti non fissati (tipo jeans), al fine di evitare l'immersione di macchie difficili da rimuovere.				
CAUTION:				
Do not put light colours of this item in contact with colouring materials, such as jeans, that might migrate and cause spots which are difficult to remove.				



W13



W06



W08



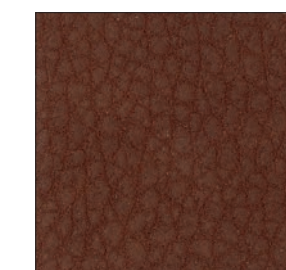
W01



W02



W03



W04



W07



W08



W09



W10



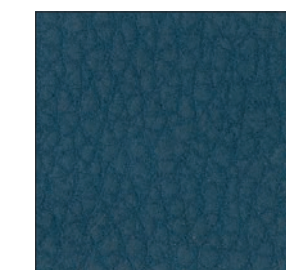
W05



W14



W12



W11